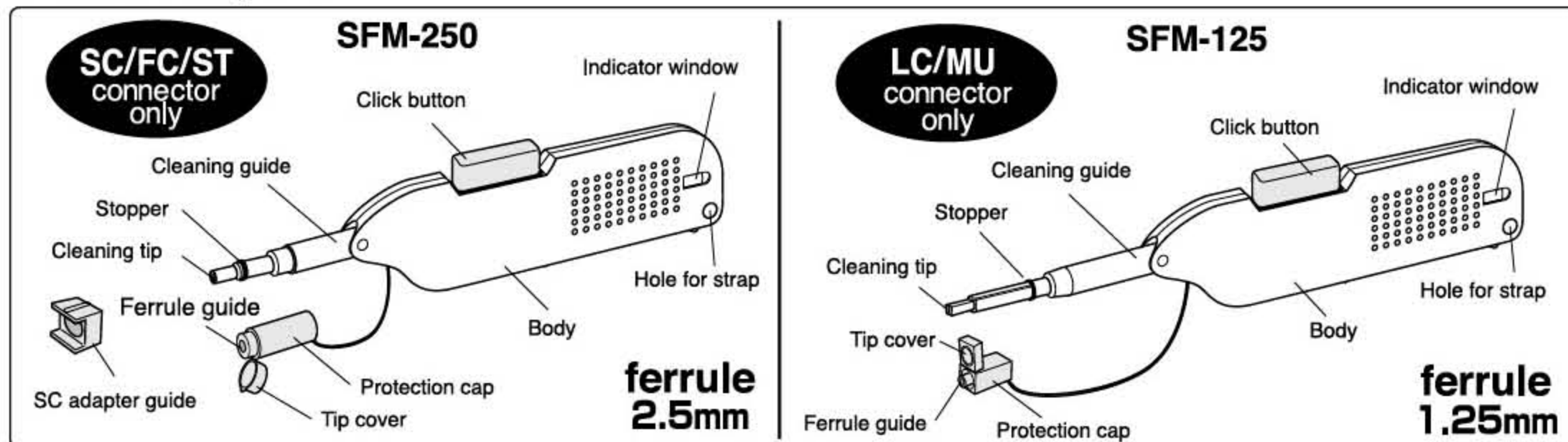


Features

The Ferrule-Mate is a suitable product for cleaning ferrule end-faces inside and outside of enclosures. The cleaning cloth at the tip can reach the ferrule end-face inside an adaptor panel, and also, the special protection cap can hold a ferrule or connector and allow you to clean the ferrule end-face without adapters. The Ferrule-Mate also has an adjustable tip for angle-mounted adapters.

Part description



Notes on Safety

Be sure to read the following to ensure safe use

These “Notes on Safety” describe precautions that must be observed to prevent danger to the person using this and others to prevent damage to property. These precautions are categorized by the following guidelines.

Explanation of Guidelines

| | | |
|--|----------------|--|
| | DANGER | These guidelines indicate the imminent threat of fatality or serious injury. |
| | WARNING | These guidelines indicate the possibility of fatality or serious injury. |
| | CAUTION | These guidelines indicate the possibility of injuries or property damage. |

Explanation of Symbols

| | | | | |
|------------------|--|--|--|--|
| prohibit actions | | | | |
| instructions | | | | |

Exclusion from Liability

| | |
|---|---|
| Seikoh Giken assumes no liability whatsoever for following items. | Damages caused by earthquake, fire outside the scope of our auliability, actions by a third party, Other accidents, intentional or accidental misuse, or use under other abnormal conditions by the user. Occasional damages (loss of business profit, discontinuation of business, etc.) arising from use or inability to use this product. Damages arising from not having observed the precautions and instructions described in this manual. Damages arising from erroneous operation resulting from use of this product in combination with connected devices and not associated with Seikoh-Giken. |
|---|---|



DANGER Be sure to read the following safety precautions before use.

| | | |
|--|--|--|
| | Do not use or leave in places exposed to high temperatures (near fires, near stoves, in the sun, etc.) or in places where flammable gases are generated. Do not place in a microwave oven or in high-pressure vessels. Do not throw into a fire or heat it up. | may cause it to ignite, explode, malfunction, or cause a fire. |
| | Do not peer through the ferrule end-face and adapters. Do not use with in-service implements. | may cause blindness. |

WARNING Be sure to read the following safety precautions before use.

| | | |
|--|---|---|
| | Do not subject to strong impact by dropping or throwing this. | may cause it to explode, generate heat, ignite, leak fluid, or malfunction. |
| | Do not disassemble, make repairs or modify. (Seikoh-Giken assume no liability whatsoever for nonconformities that arise as a result of modification.) | may cause electric shock. |
| | Do not splash with water or other liquids. (Pay particular care when using this in rain, snow, at sea, at the beach, or in similar circumstances.) Never use this in places where it can be directly splashed with water or other liquids, in highly humid places such as bathrooms, or handle it with wet hands. | may cause injury or accident, or malfunction and damage. |
| | Should this become splashed with liquid, immediately stop cleaning. Malfunctions caused by splashing or moisture are outside the scope of the Warranty and cannot be repaired. | |

CAUTION Be sure to read the following safety precautions before use

| | | | | | | |
|---|--|---|---|-----------|------------------|----------|
|  Prohibited | Do not store in direct sunlight (in automobiles, etc.), in places that become hot, in places that fall to extremely low temperatures, or in humid or dusty places. Do not place on unstable surfaces such as on top of wobbly benches or inclined surfaces. Keep the Protection cap and Tip cover in place while not in use. | may deform it or cause it to malfunction. | | | | |
| | Do not swing around holding it by its hand strap. Do not place within the reach of small children. Do not use a hand strap if any part of it is damaged. Do not point Cleaning Tip at eyes | may cause injury or accident, or malfunction and damage. | | | | |
|  instruction | When you bend Cleaning tip upwards,take care not to pinch a finger at the bend section. Do not put excess stress on the bend section during use. Do not hook the strap between Body and Protection cap. | may cause injury or accident, or malfunction and damage | | | | |
| | If you experience a strange sensation on your skin, immediately discontinue use, and consult a skin specialist. | You may also experience itching, rashes, eczema or other symptoms depending on your physical condition. | | | | |
| | The following materials are used in this components | | | | | |
| | <table><tr><td>Body, Click button, Cleaning Tip, Cleaning guide, Stopper</td><td>ABS resin</td></tr><tr><td>Indicator window</td><td>PC resin</td></tr><tr><td>Protection cap, Tip cover</td><td>PP resin</td></tr></table> | | Body, Click button, Cleaning Tip, Cleaning guide, Stopper | ABS resin | Indicator window | PC resin |
| Body, Click button, Cleaning Tip, Cleaning guide, Stopper | ABS resin | | | | | |
| Indicator window | PC resin | | | | | |
| Protection cap, Tip cover | PP resin | | | | | |
| | Do not use this equipment if you smell a strange odor, hear abnormal sounds, detect overheating, or other abnormalities occur. If an abnormality occurs, stop cleaning. Also, if you drop or damage this, do not use it in this condition, and contact Seikoh Giken or your nearest sales agent. | | | | | |

CAUTION Observe all ESD safety precautions while using this product. Failure to follow ESD safety precautions could result in damage to the components being cleaned by the product as well as to the product itself.

- Before operating this product, always make sure to eliminate electrostatic discharges (ESD) from operator's body.
- To prevent static damage, discharge static electricity from your body before you touch any electronic components. You can do so by touching an unpainted metal surface (like a window frame or door knob)
- As you continue to work, periodically touch an unpainted metal surface to remove any static charge your body may have accumulated.
- When using this product in an assembly line or factory where electronics components are present, make sure to work in a properly electrostatic protected area (EPA). If possible, use a grounding mat and avoid working in carpeted areas. Keep body movement to a minimum while cleaning.

Instruction

Cleaning through Adapter

SFM-250

- Remove Protection cap.

SFM-125

- Remove Protection cap.

SFM-250

- Insert Cleaning tip into adapter.

SFM-125

- Insert Cleaning tip into adapter.

SFM-250

- Push in until Stopper of Cleaning guide comes in contact with the adapter.

SFM-125

- Push in until Stopper of Cleaning guide comes in contact with the adapter.

SFM-250

Maintain pressure to realize spring pressure inside adapter.

SFM-125

Maintain pressure to realize spring pressure inside adapter.

SFM-250

How to attach the SC adapter guide

Place the SC adapter guide over the end of Cleaning guide.

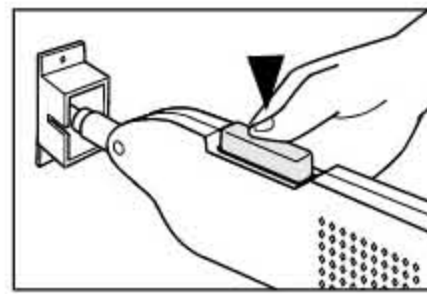
Slide it back until it touches the Stopper.

Attachment completed. Used only for SC connector type.

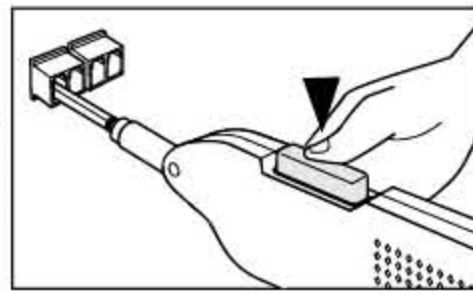
Inserts straight

Inserts straight

- Depress and release the Click button one time. For extremely dirty connectors, two Click button pushes may be necessary.
- Remove Ferrule mate from adaptor and replace Protection cap before storage.



- Depress and release the Click button one time. For extremely dirty connectors, two Click button pushes may be necessary.
- Remove Ferrule mate from adaptor and replace Protection cap before storage.



Cleaning without Adapter

SFM-250

- Open Tip cover.
- Insert your ferrule or connector into Ferrule guide until ferrule or connector housing contacts the face of the Protection cap.

SFM-125

- Open Tip cover.
- Insert your ferrule or connector into Ferrule guide until ferrule or connector housing contacts the face of the Protection cap.

Inserts straight

Inserts straight

Inserts straight

Inserts straight

SFM-250

- Maintain pressure on the ferrule or connector. Depress and release the Click button one time.

SFM-125

- Maintain pressure on the ferrule or connector. Depress and release the Click button one time.

SFM-250

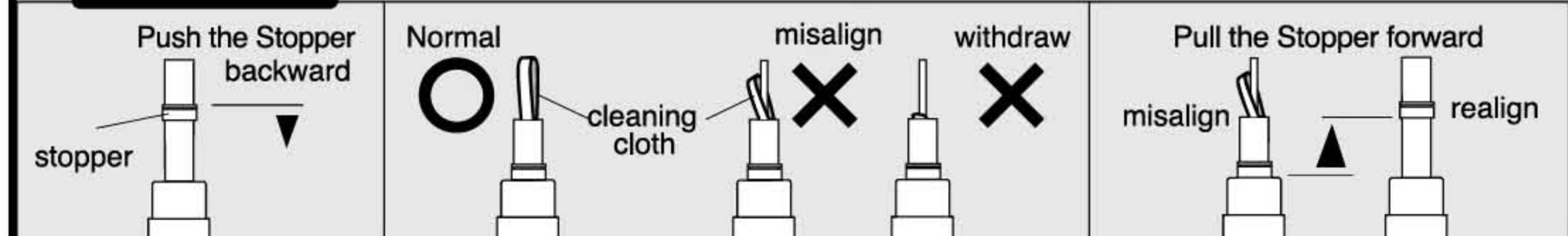
- Remove your ferrule or connector from the Ferrule guide and close the Tip cover of the Protection cap.

SFM-125

- Remove your ferrule or connector from the Ferrule guide and close the Tip cover of the Protection cap.

Importance

How to realign the cleaning cloth



Attention

Please hold the base of the Cleaning Guide when you tilt the tip upwards. SFM-250 can be tilted on an angle of 15,30 or 45degrees. SFM-125 can be tilted on an angle of 15 or 30degrees. Do not tilt cleaning guide down; **ONLY TILT UPWARDS**. When you feel the Click button does not move smoothly, please check the indicator window (cleaning cloth may be empty). See figure below.

full empty

Unnecessary contact to any other part of adapter or finger may affect the cleaning performance; please keep away from dirty areas except those being cleaned. Do not exert unnecessary force on this product. Doing so may damage the display or internal substrates, or cause a malfunction. Also, take care not to store the Ferrule Mate in a way that subjects it to extreme force, such as to bend the housing or tip. Even if there is no exterior damage, this is not covered by the warranty. This product is not refillable; please dispose as industrial waste

